

South Facade:

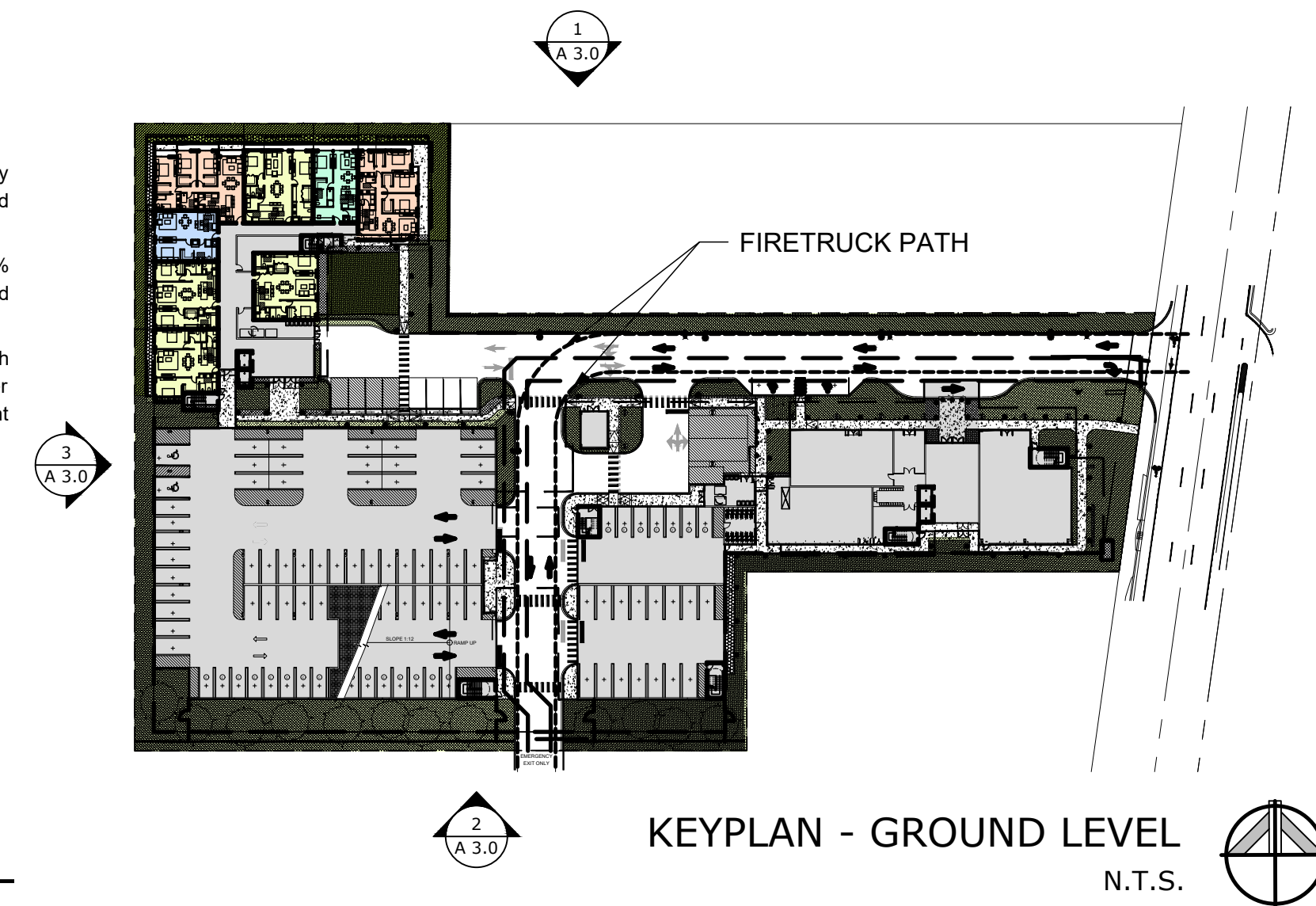
Tier A - features denser panels with approximately 30% open area, grounding the facade and providing privacy.

Tier B - transitions to lighter panels with 50% openness, incorporating vertical slits and layered transparency.

Tier C - returns to the residential language, with terraces and glass railings echoing the middle tier of the primary facade, separated from the adjacent 1-family houses with a 100 ft setback.

NOTE:

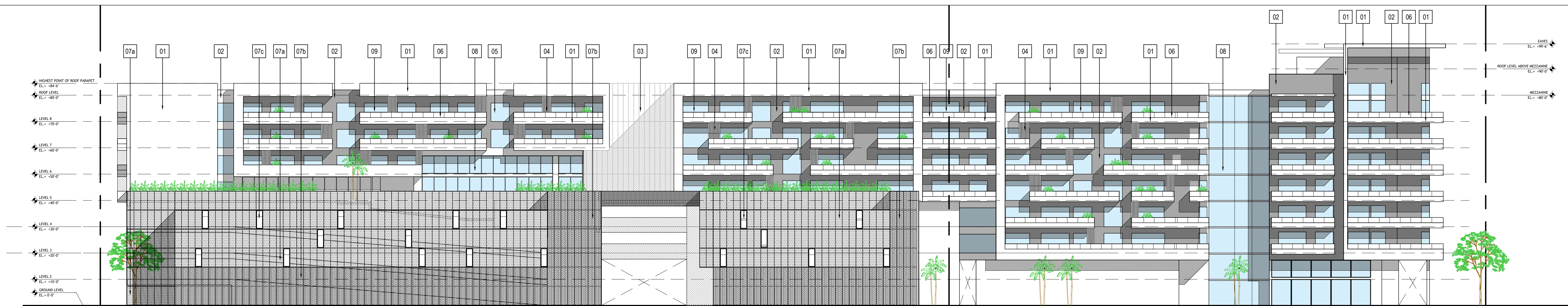
REFER TO SHEET A3.1 FOR KEYNOTE AND MATERIAL LEGENDS



KEYPLAN - GROUND LEVEL

N.T.S.

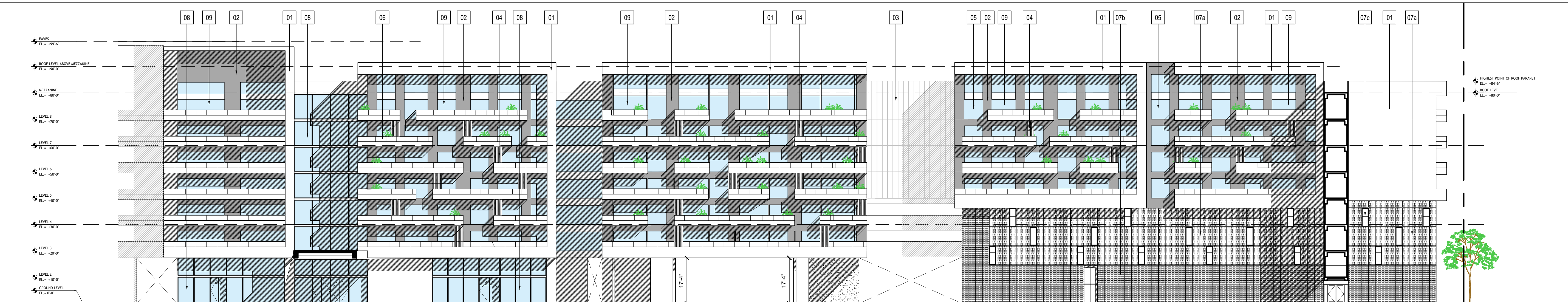
SECTION 3
SCALE: 1"=20'-0"



NOTE:

REFER TO SHEET A3.1 FOR KEYNOTE AND MATERIAL LEGENDS

SECTION 2
SCALE: 1"=20'-0"



NOTE:

REFER TO SHEET A3.1 FOR KEYNOTE AND MATERIAL LEGENDS

SECTION 1
SCALE: 1"=20'-0"

AAC

PZ25- 12000016
03/03/2026

COPYRIGHT 2025 MADSEN DESIGN, ALL RIGHTS RESERVED

MADSEN
DESIGN

Architects
Planners
Interior Design
220 NE 11th St.
Boca Raton FL 33432
416 SE 5th St.
Delray Beach FL 33483

P: 561 - 749 - 1234

GREG MADSEN - AR92411

THE SATORI

4211 N FEDERAL HWY
POMPANO BEACH, FL 33064

SUBMITTALS:

ELEVATIONS

A3.0

PROJECT NUMBER: 25-008